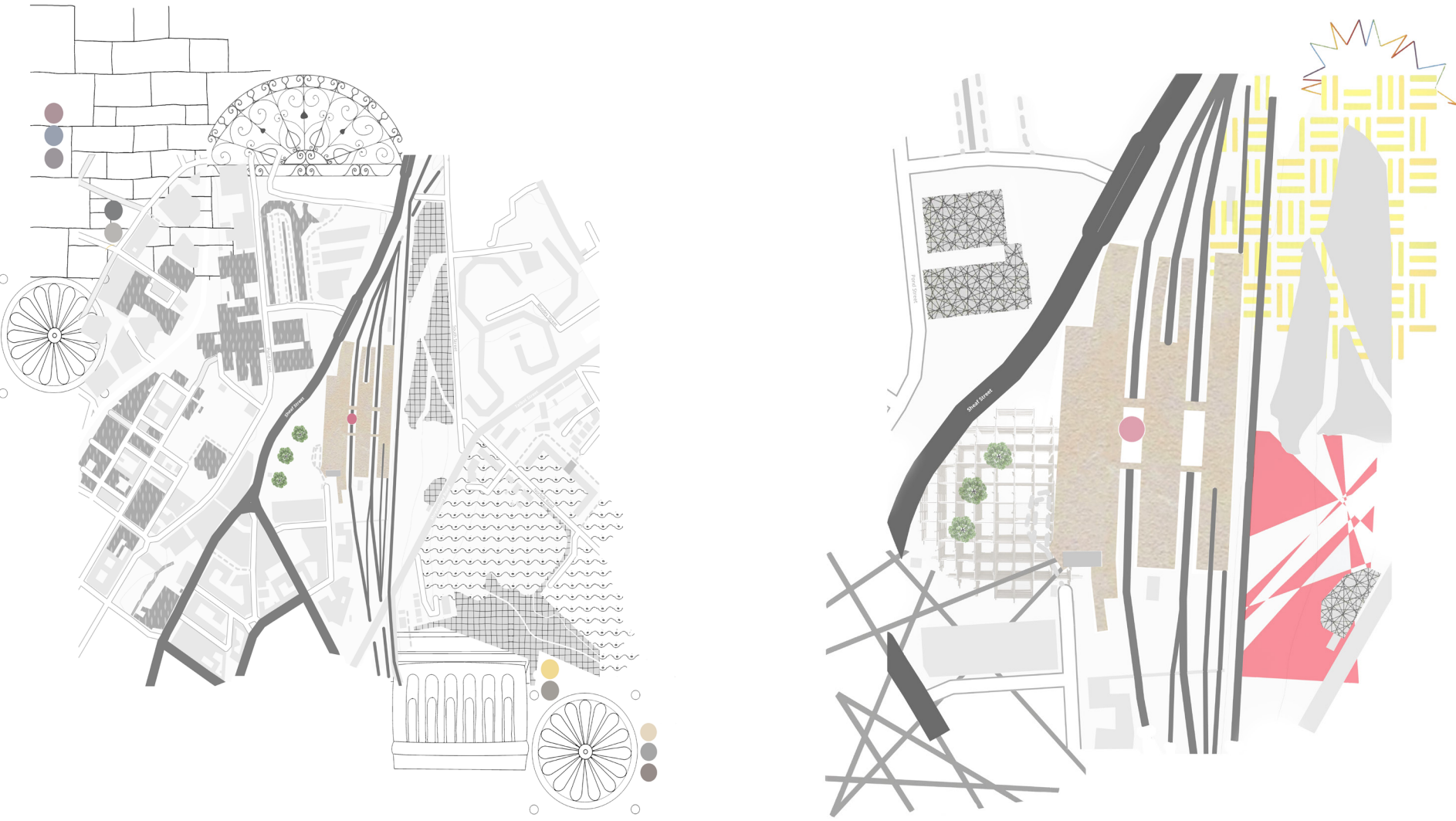


CONCEPT & ANALYSIS



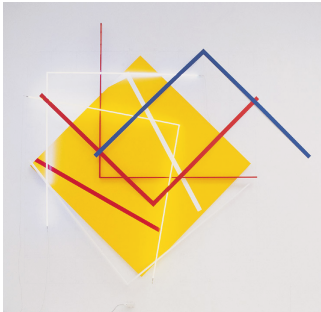
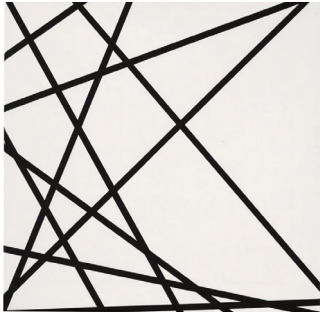
Sheffield Midland Station map made up of the textures and patterns found in and around the site. This subjective response to the site then lead to the creation of two further maps zooming into the station while illustrating the idea of the work of Francois Morellet becoming the layout of the exhibition space.

By Chance

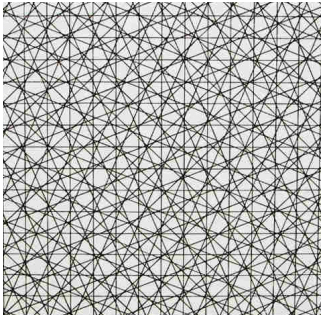
The work of Francois Morellet arrives at Sheffield Midland Station in a pop-up exhibition, aiming to connect the community and offer a smooth transition between working life and the daily commute.

Through a series of mixed media work inspired by the concept of chance, this exhibition offers the opportunity to engage with a number of abstract installations, offering a pause in the cycle of everyday life. Each carefully curated piece of work displays a series of geometric shapes and repeating patterns which reflect light and shadow. They also represent the idea of chance and how this can play a role in the creation of art and also our interactions in day to day life.

By Chance invites you to cross paths with an eclectic mix of sensory artwork, to explore the idea of chance as a reoccurring factor within the routines of daily life.



A collection of work by Francois Morellet, a self taught artist who specialised in sculptures, installations and paintings. His geometric artwork was often inspired by the notion of chance.



11/10/24 15:55



09/10/24 13:01

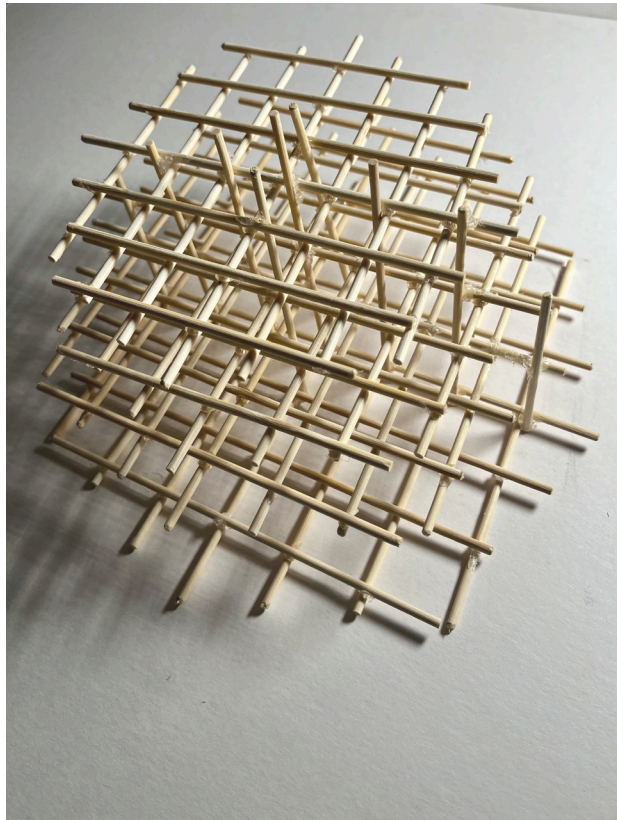
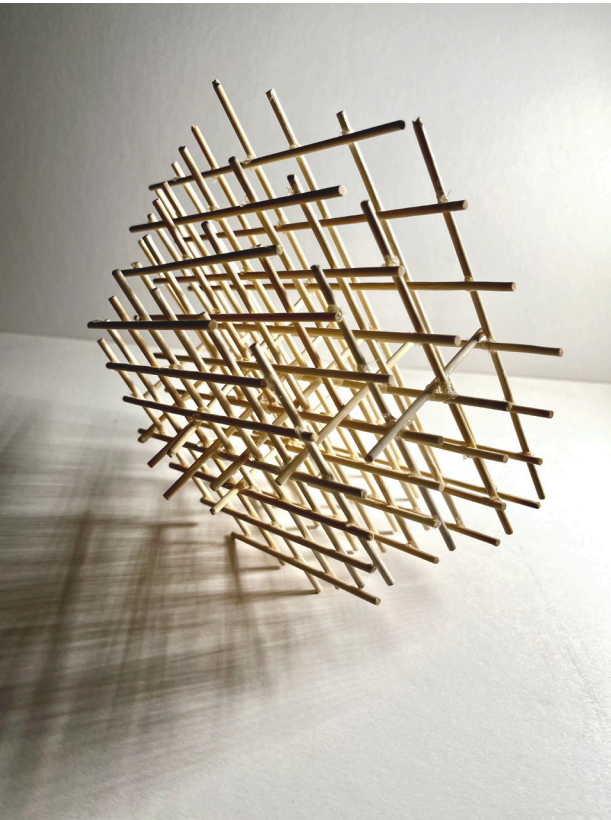
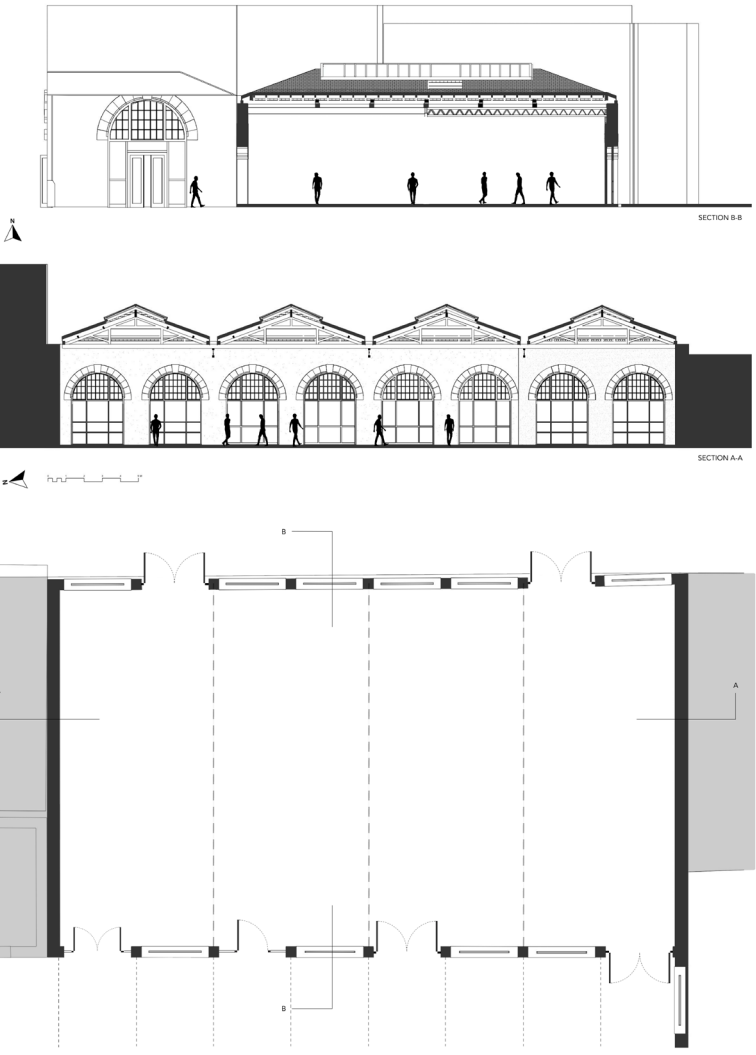


09/10/24 13:03

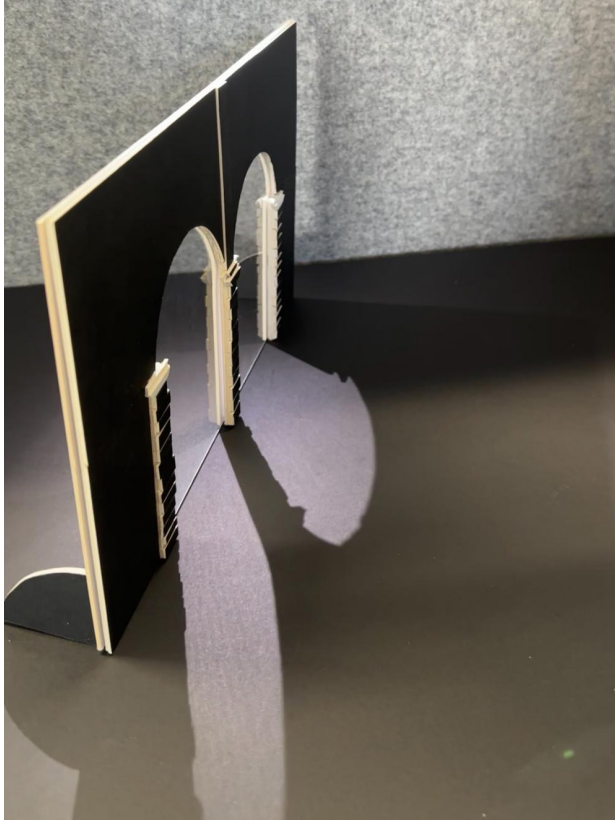
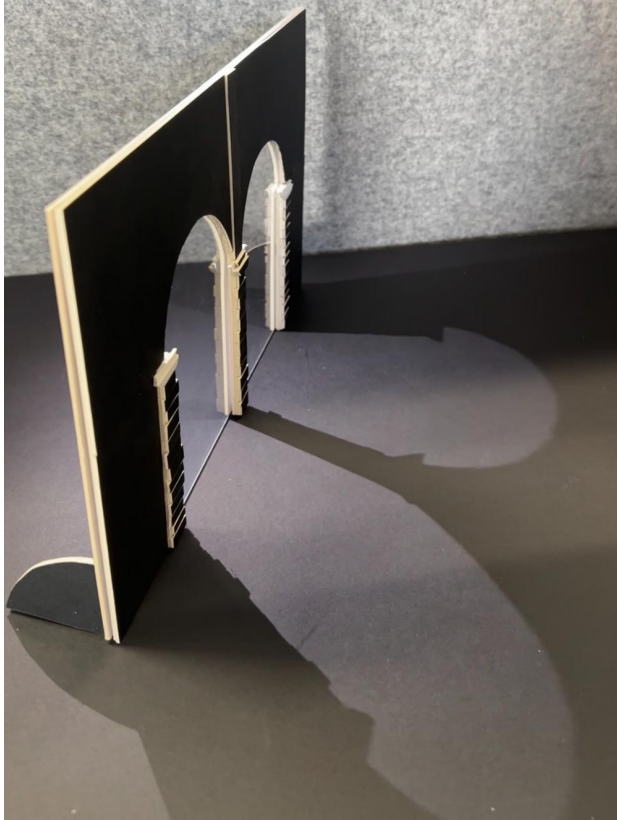


09/10/24 12:42

Sheffield Midland Station Existing Site Plans



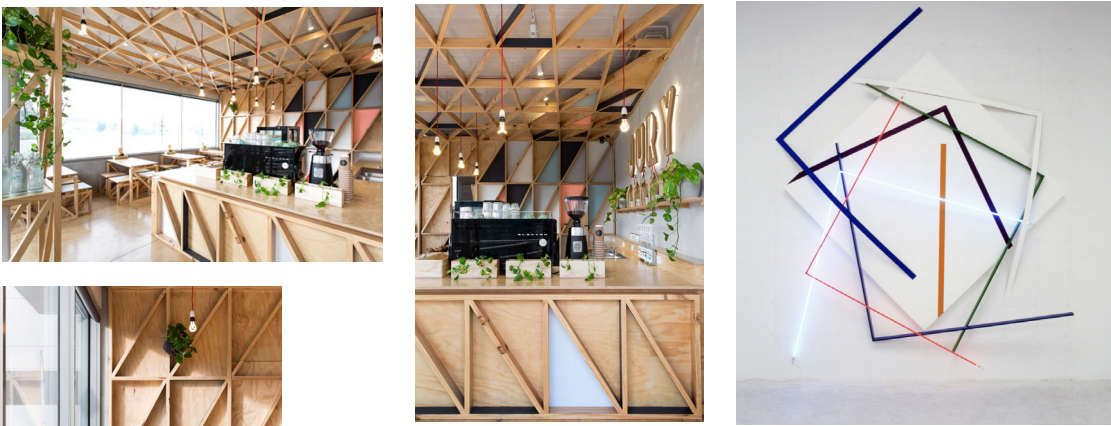
Experimenting with light and shadow using my recreation of 'Sphere Trame' made out of wooden skewers.



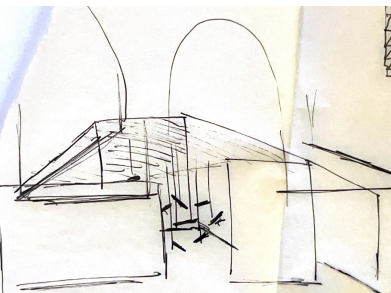
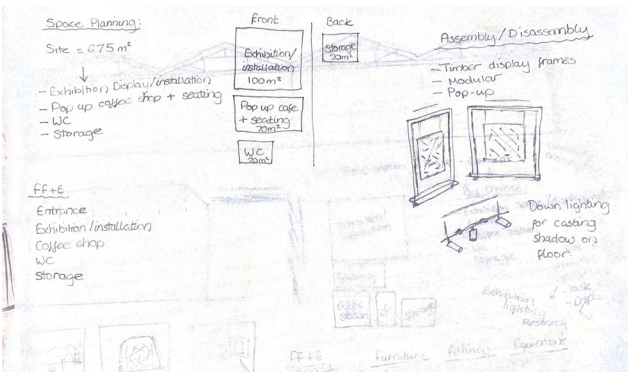
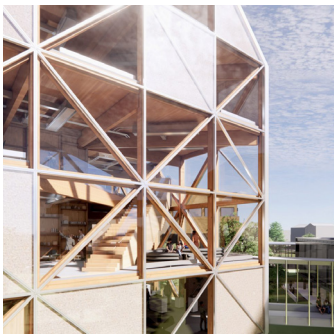
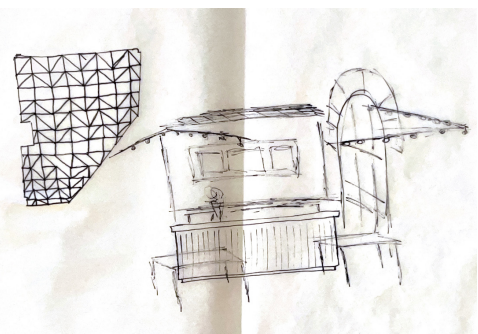
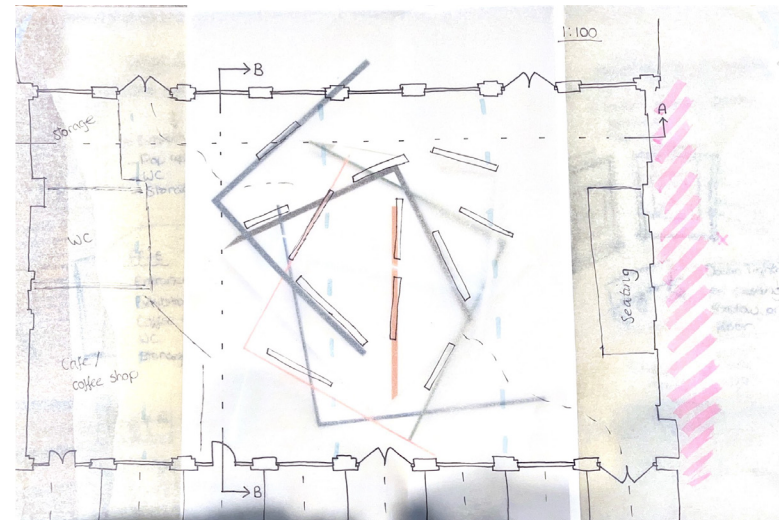
Taken from a group project showing the movement of light throughout the day through the arches of the train station.



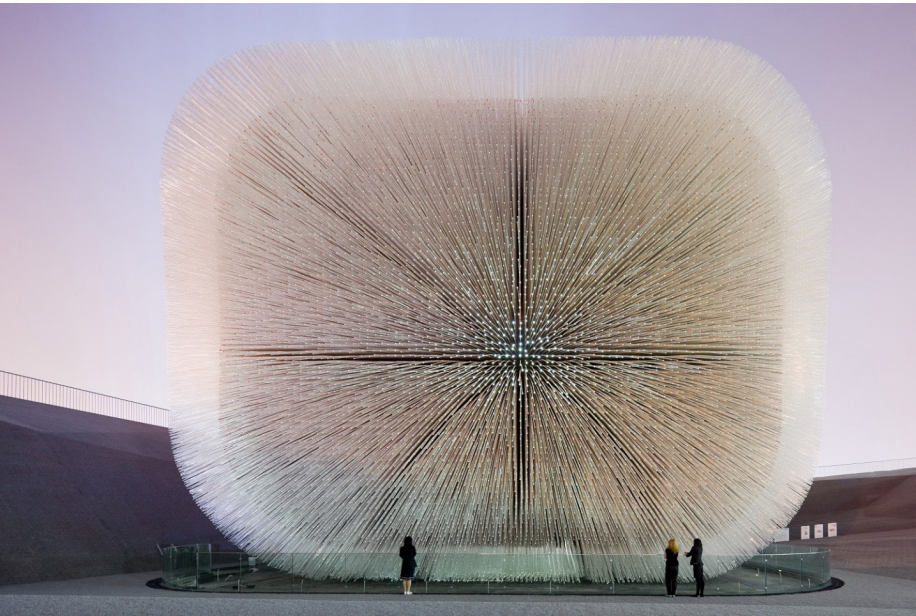
EXPERIMENTATION & DEVELOPMENT



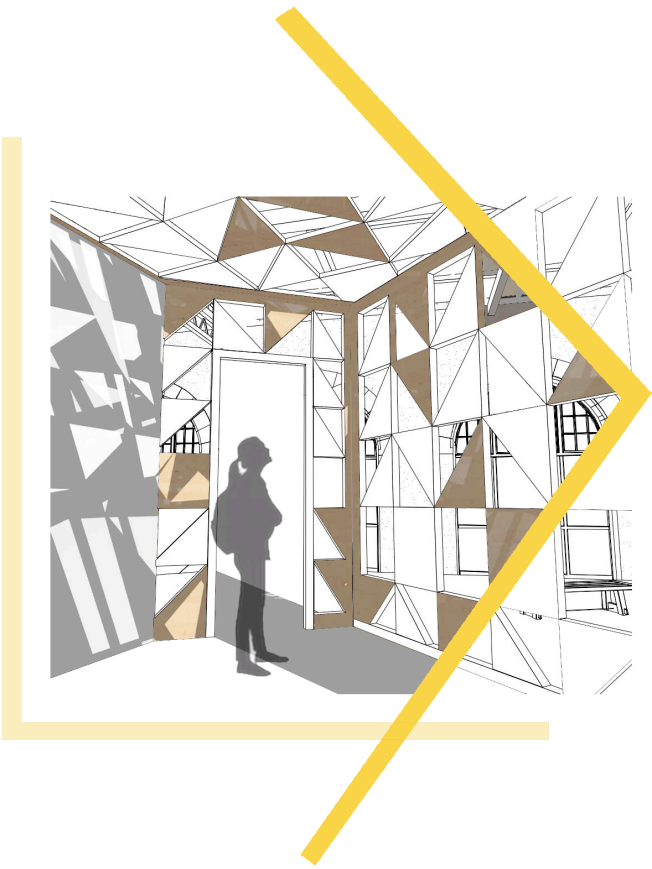
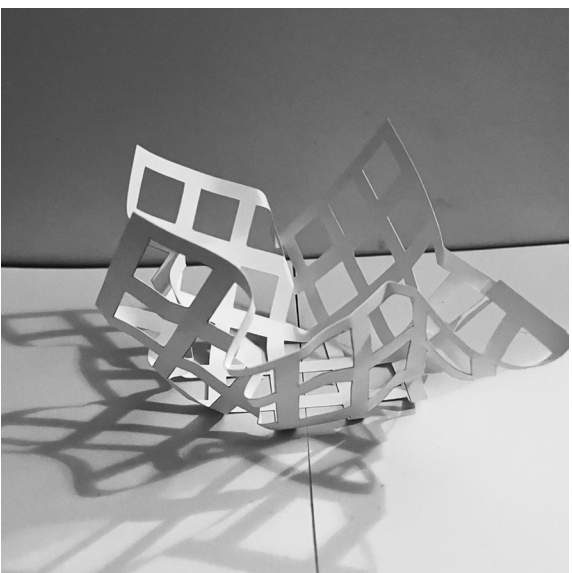
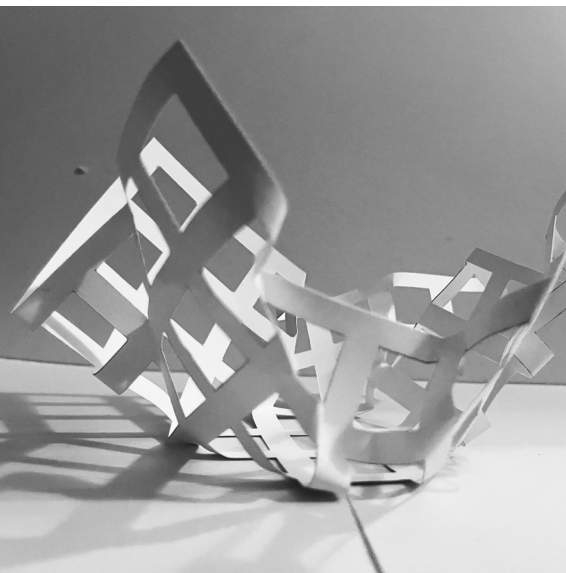
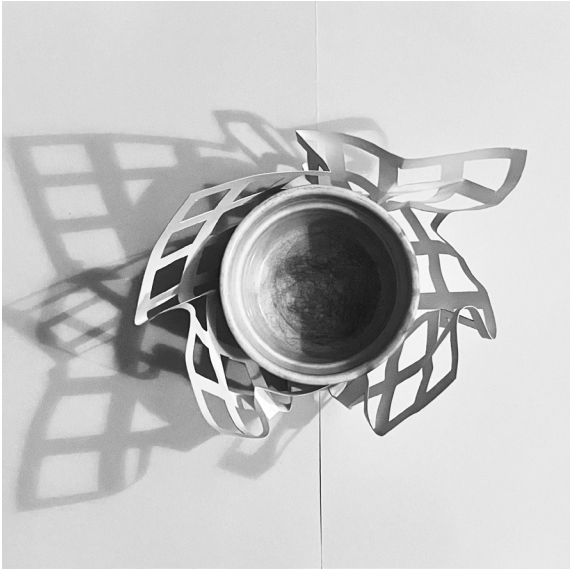
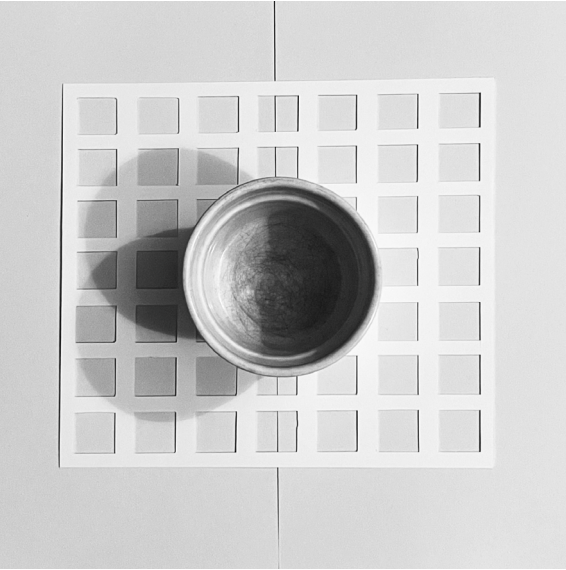
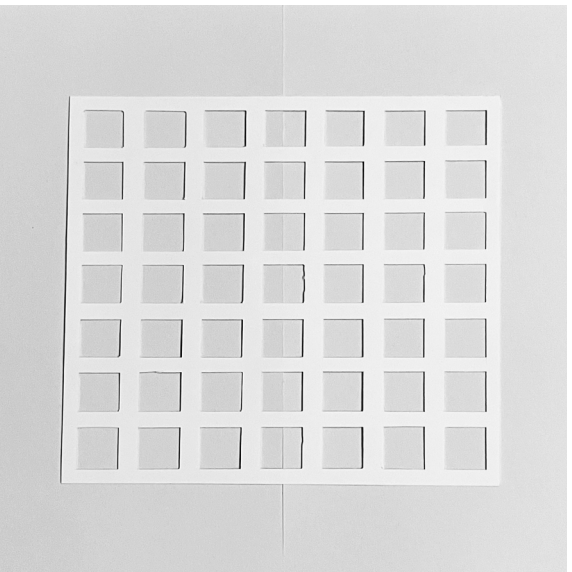
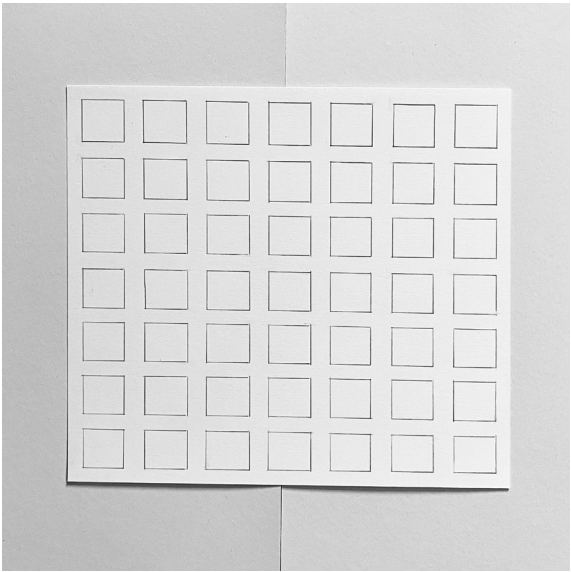
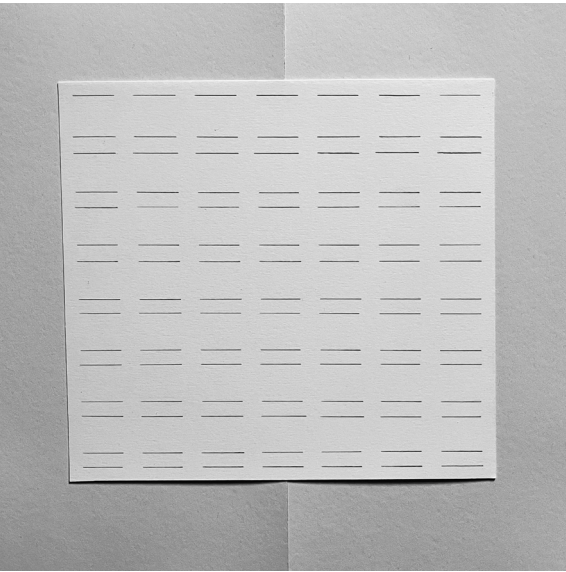
Drawings showing early concept development of potential layouts of my exhibition using inspiration from precedent studies and the work of Francois Morellet.



The Seed Cathedral by Heatherwick Studio

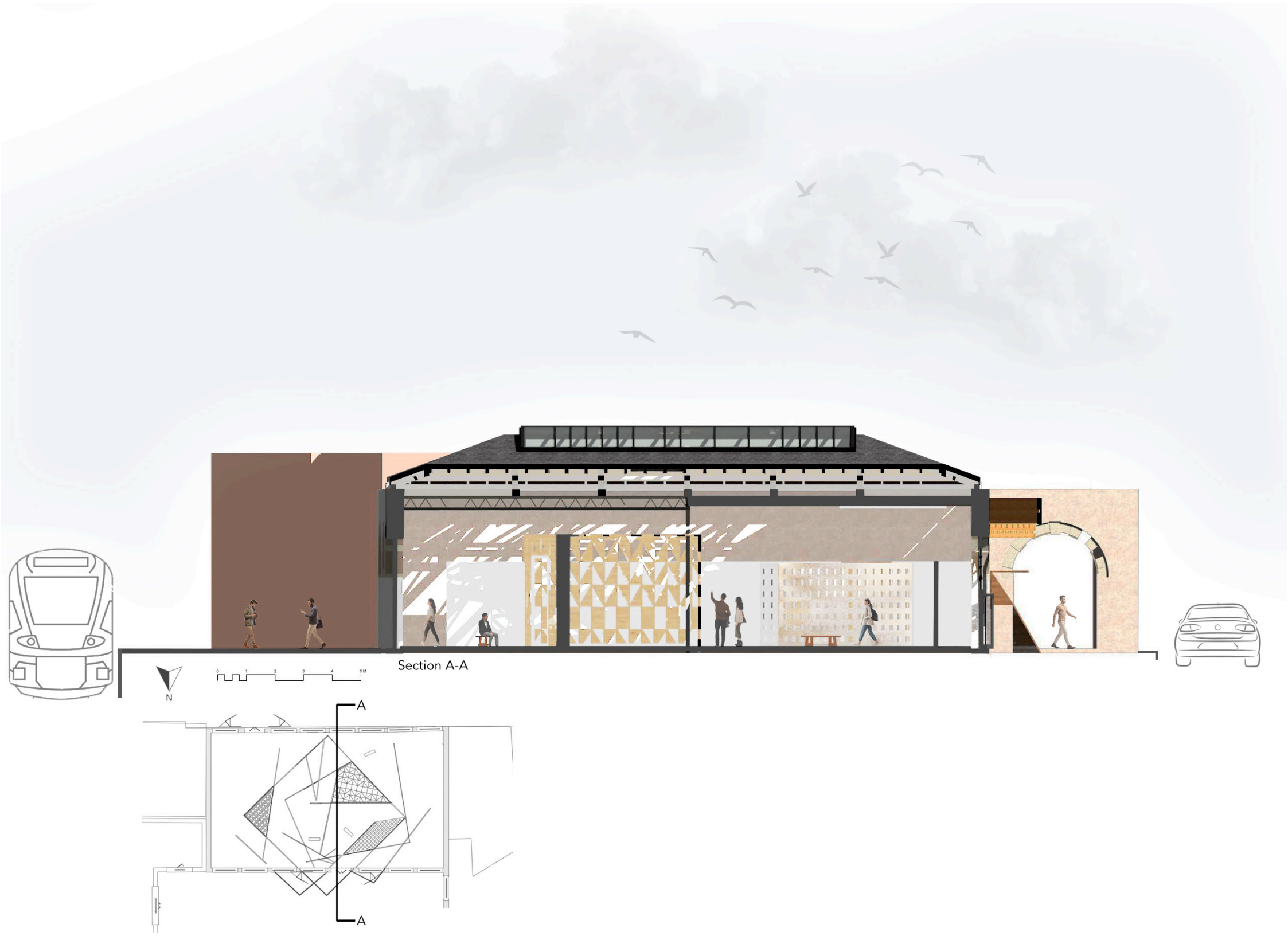
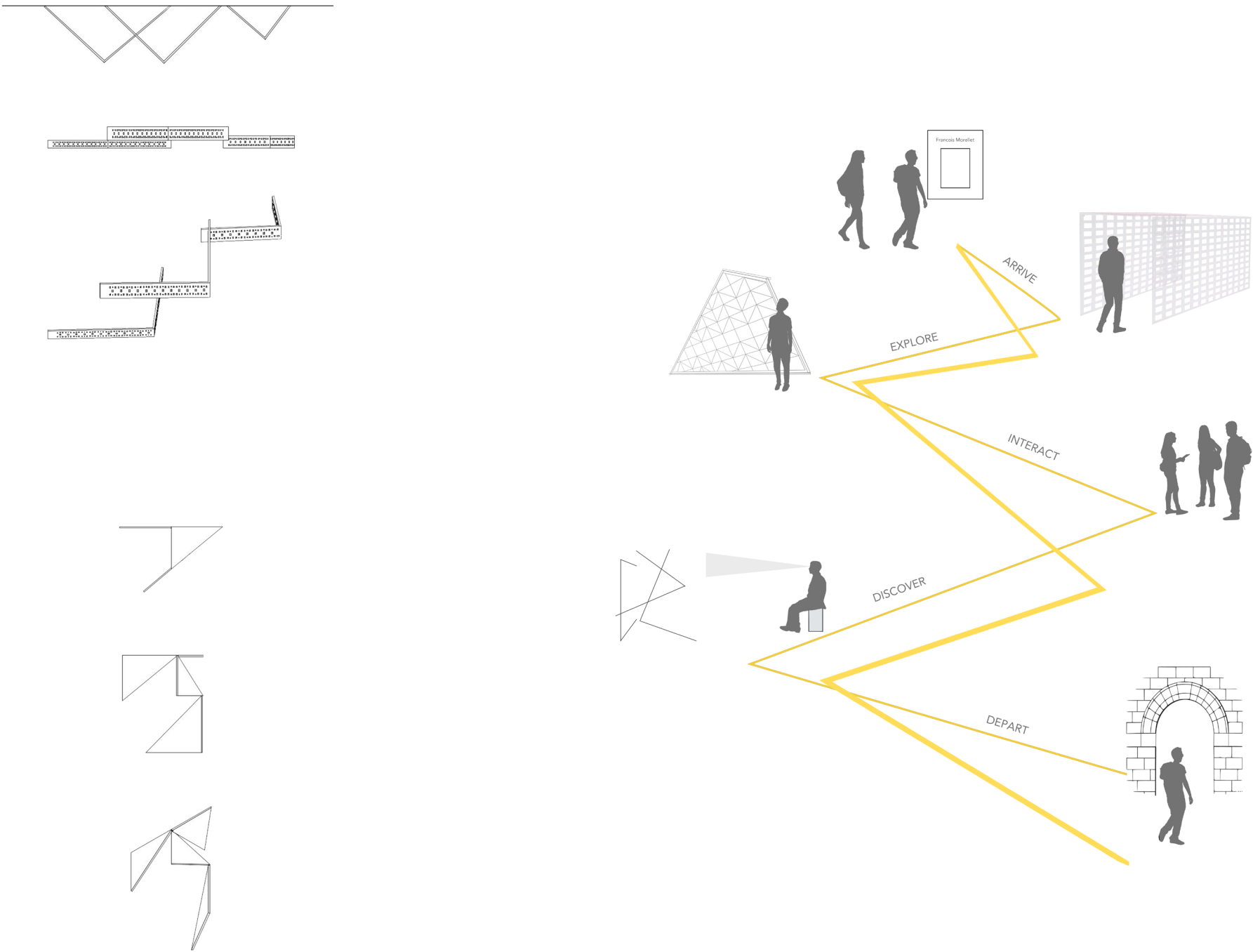
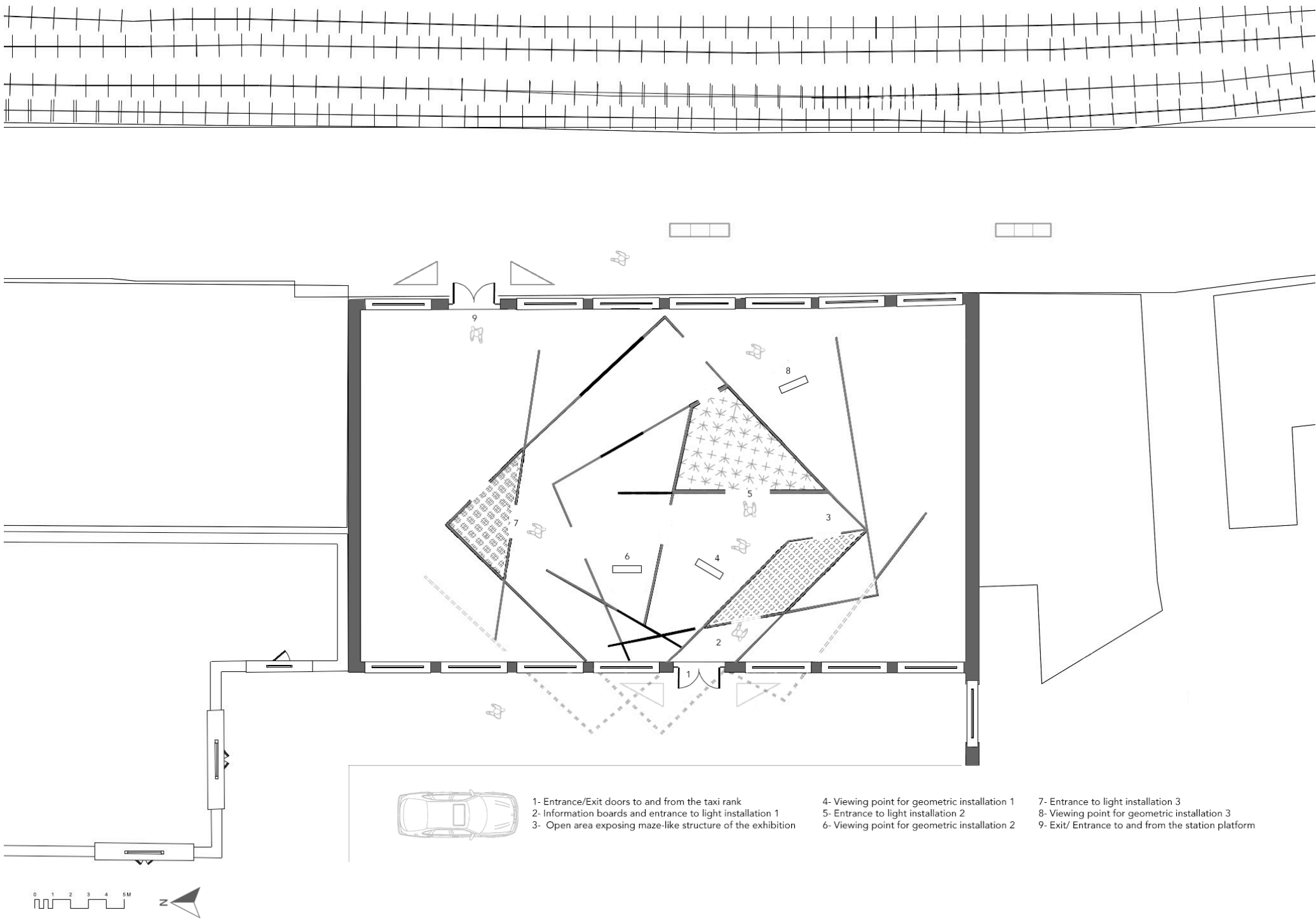


Seed Cathedral  
The Seed Cathedral designed by Heatherwick Studio was a pavilion aiming to attract users through its striking appearance both up close and from afar. It was a large 20 metres high structure sitting on 6000 sqm at the Shanghai World Expo in 2010. The idea behind the design was to explore the contrasts and similarities between the city and nature and how these elements could be combined to represent the UK. The Seed Cathedral is made up of 60,000 clear rods containing seeds at the ends of each piece. Throughout the day, sunlight beams through the structure to light up the inside where users can view the intricate details of the design.



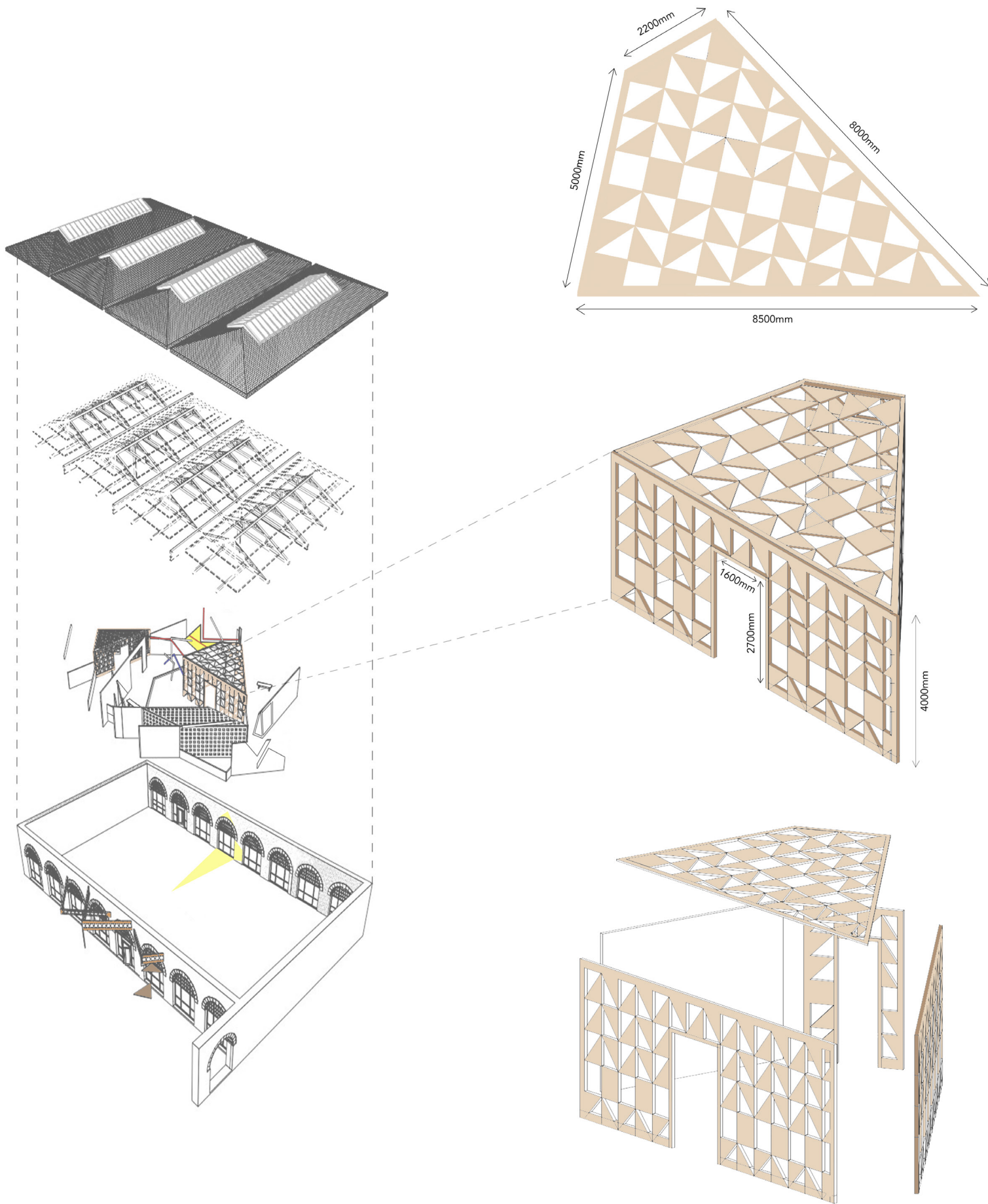
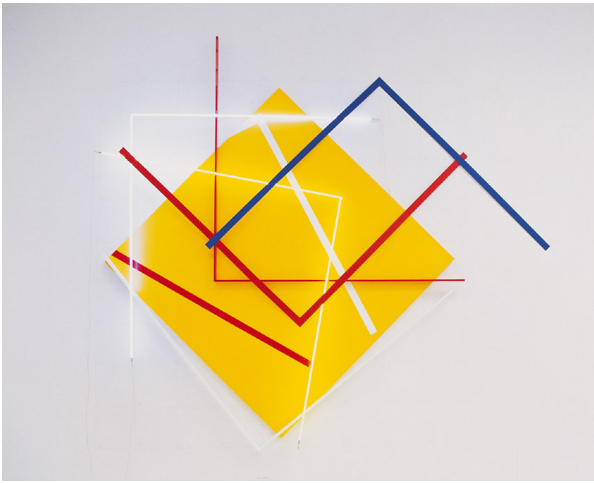
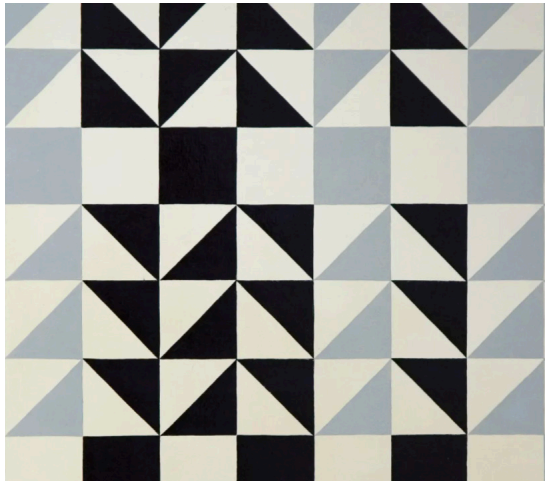


PLANS & APPROACH





EXPERIENCE





DETAILS & LIGHTING

